

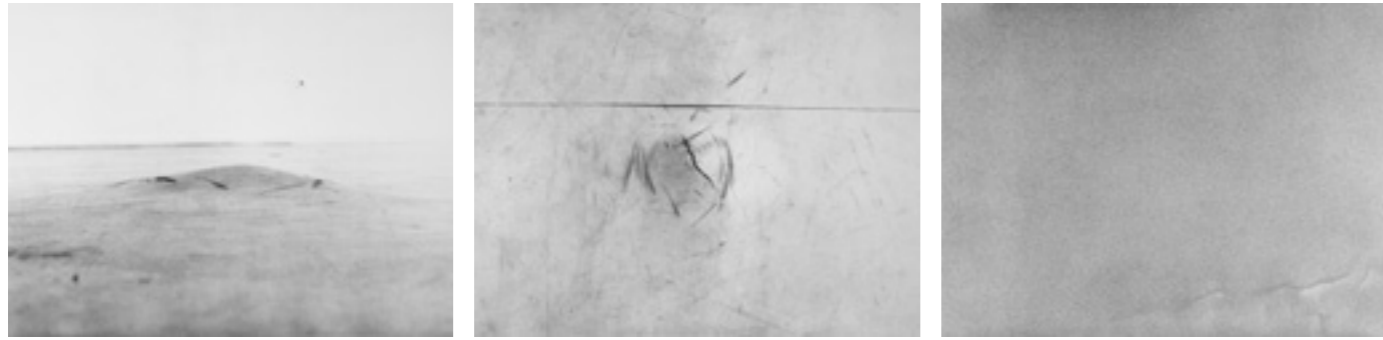
# Index of Works



*Shining Bright*, C-print, 47.2 x 118.1 in, 2009

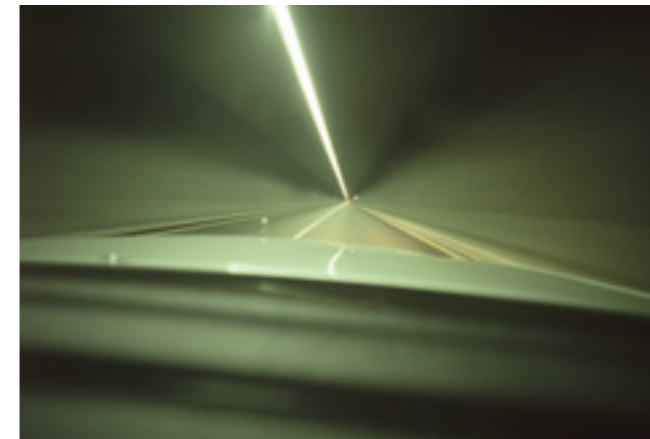


*Gasometer*, Inkjetprint, 15.7 x 23.6 in, series of 4, 2009



Indoor Landscapes, 3 pieces

- Mount Everest I*, B/W-print, 41.3 x 57.1 in, 2008
- Mount Everest II*, B/W-print, 41.3 x 57.1 in, 2008
- Nordwand (North Face)*, B/W-print, 41.3 x 57.1 in, 2008



Sonne, Mond und Sterne (Sun Moon Stars)  
oder: Der Letzte macht das Licht aus (or: Turn out the lights), series of 3

- Sonne (Sun)*, C-print, 47.2 x 35.4 in, 2009
- Mond (Moon)*, C-print, 22.4 x 33.5 in, 2009
- Sterne (Stars)*, C-print, 22.4 x 33.5 in, 2009



Dropped Landscapes, 3 pieces

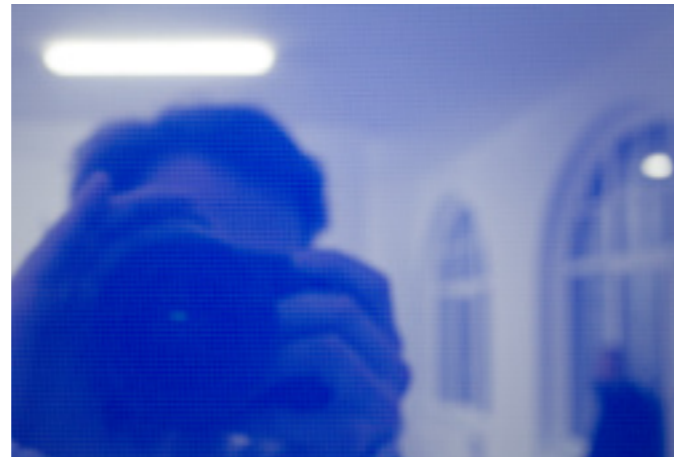
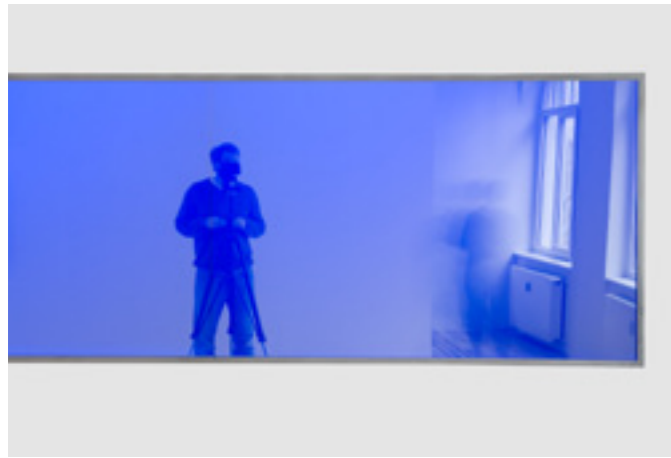
*Rot (Red)*, C-print, 41.3 x 60.2 in, 2008

*Gelb (Yellow)*, C-print, 41.3 x 60.2 in, 2008

*Blau (Blue)*, C-print, 41.3 x 60.2 in, 2008

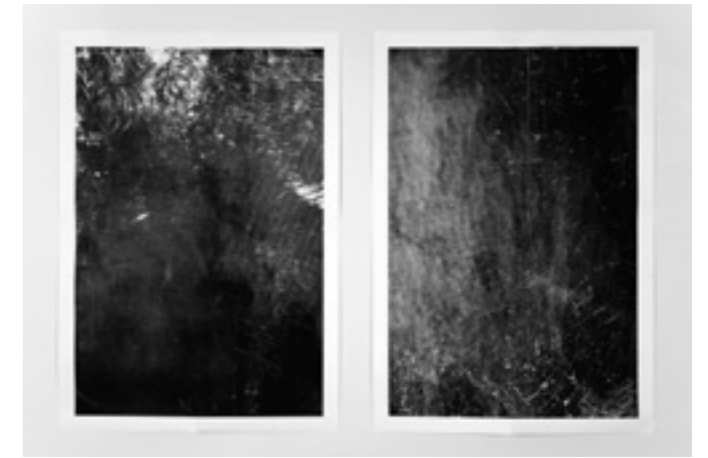
While watching the sublime sunset and being absorbed by the gorgeous blaze of color mother nature provides the photographer trips over something and drops his camera. Coming down to earth: these are the results.

Installation view, *Looking Glass*, Galerie Campagne Première, Berlin, 2008



*B255* (Installation view/detail), two-channel video installation, mirror, 39.4 x 118.1 in, 2008

The two-channel video installation *B255* is a rear projection of the color *Blue #255* onto a semireflecting mirror. As a result of a complementary effect, the two blue fields touch in a narrow strip of yellow. The mirror works either as a flat surface, or as a depiction of multidimensional (infinite) space.



*Tabletop* (Installation view), 6 pieces

*Tabletop 1*, Inkjet on paper, 98.4 x 68.9 in, 2008

*Tabletop 6*, Inkjet on paper, 98.4 x 68.9 in, 2008

The series *Tabletop* is a medial tapestry, not entirely free of ironic allusion: the negatives were laying on a table for several years, recording the movements and turbulences on the desk under diverse influences and effects of time and production conditions.

Installation view, *Looking Glass*, Galerie Campagne Première, Berlin, 2008



*Monocronics 20\_130*, C-print, 59.1 x 59.1 in, 2008  
*Monocronics 45\_45*, C-print, 59.1 x 59.1 in, 2008  
*Monocronics 35\_130*, C-print, 59.1 x 59.1 in, 2008

The series *Monocronics* shows the color reproduction of the surface of an TFT-monitor. The almost unreachable attempt to generate the electrical equivalent to monochrome paintings.

*Weißabgleich (Whitebalance)*, BWV-print/baryta paper, 49.2 x 70.9 in, 2008



*Disco* (Installation view), Color panels, light projektion, monocromatic light, controller, 2009

A monochromatic room light reduces the colors of the photographs (cyan, magenta and yellow) to merely their respective brightness values. Putting white light on the photographs the primal colors of the prints will become visible again. Using color changing lights the color-prints will turn out in different color combinations. The space installation *Disco* explores the effects of additive and subtractive color mixing behaviors while creating a sensory experience of color theory principles. The lights are driven by an automatized program.

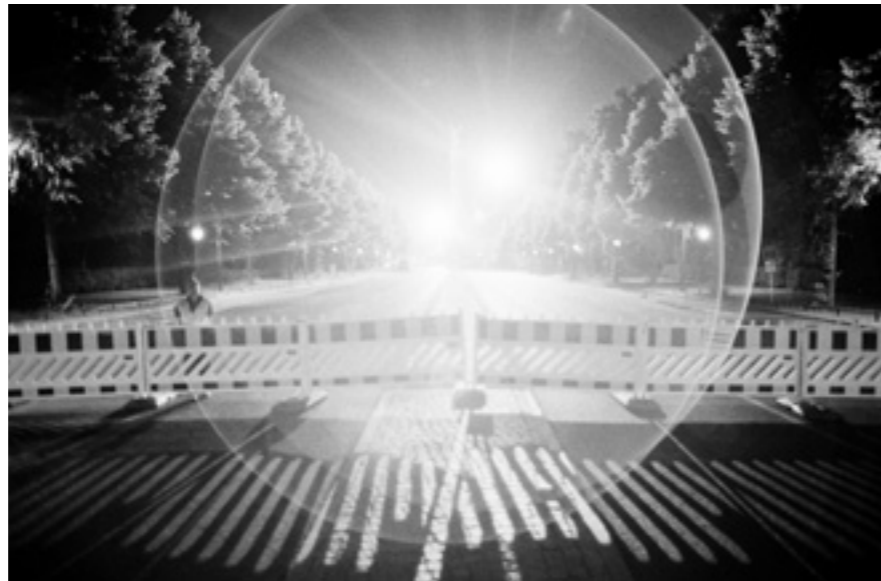
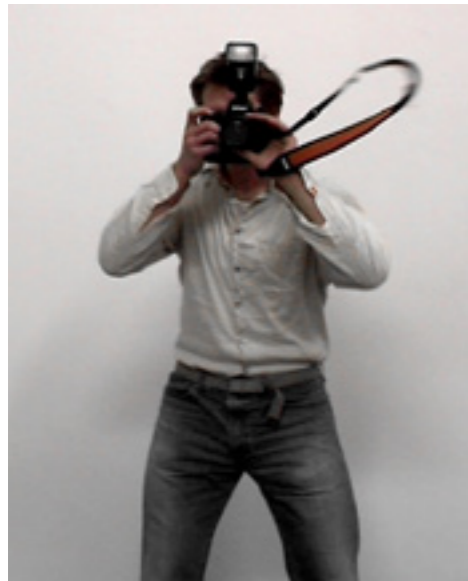
Installation view, *One Week*, Group Show, Berlin, 2009



*LUX.US* (Installation view), 16 Steel panels, phosphorescent paint, spotlight, computer, 39.4 x 39.4 in, 2007

The steel panels are coated with phosphorescent paint. After exposure to light they have a sustained glow which lasts for some minutes. People who were standing in front of the plates will be captured by the flashing light from behind. They will be visible as shadows on the wall because they prevent some areas of the panels from getting „charged“. To intensify the process the light flashes several times before the displayed multi-layered structures will fade over time.

Installation view, *Wolfgang Joop*, Stiftung Oper in Berlin, Bühnenwerkstätten, Berlin, 2008



*Shootingstar (Still)*, Video 720 x 576 px, 0'18 min/Loop, 2003

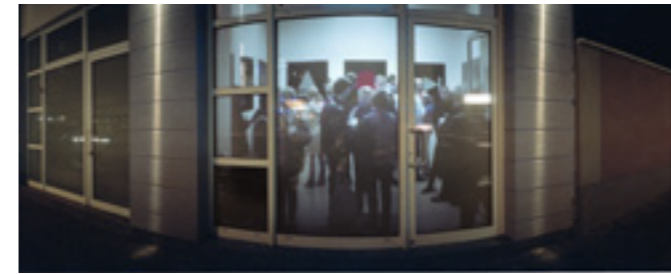
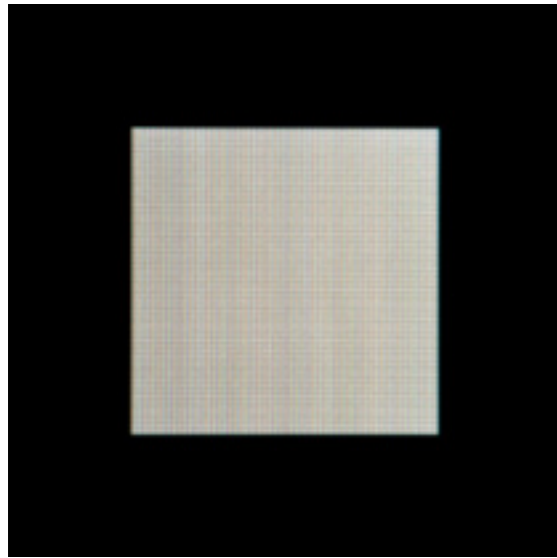
*Supernova*, B/W-print, 49.2 x 70.9 in, 2008



*Autofiction* (Installation view), Fiat 132, Videoinstallation, Video 720 x 576 px, 90 min/Loop, 2004, [www.autofiction.net](http://www.autofiction.net)

The car itself serves as a black box. The film is projected from the rear onto the windshield and creates the illusion of someone sitting in the car. You can watch the movements of the driver while he is sleeping, eating and actually driving, but the car will remain in its position and it is not going to move.

Installation view, 6. Bremer Kunstfrühling, Bremen, 2009



Navigation Tools, 9 pieces

*STOP*, C-print, laminated behind glass, 39.4 x 39.4 in, 2005  
*REC, NEXT, STOP, EJECT, PLAY, REV, PAUSE* (Installation view with *Autofiction*)

*Set und Reset*, Videoinstallation, 1024 x 768 px, 3:07'02 min/Loop, 2005

On the opening day of the exhibition the venue is closed. But there are still people inside, how did they get there?  
The actual opening took place one week ago. Now you can only see the projected documentary of the opening on the display window as a rear projection. But it looks so real, that you will try to open the door.

Installation view, with projection light on, *Set und Reset*, NBK, Berlin, 2005



Dual Process, 2 pieces

*Spirit Level*, C-print, 47.2 x 107.1 in, 2008

*Spirit Level 2*, C-print, 47.2 x 107.1 in, 2008



*Name-Dropping*, B/W-print/baryta paper, 19.7 x 27.6 in, 2009

*Setting (Hotshot)*, B/W-Diaprojektion, 81 Slides, 2004

The foto shoot of a self-portrait was documented by an automatized camera. The process can be viewed on 81 slides, but you will not get to see the actual photograph.

*I. Mai*, B/W-print, 29.5 x 118 in, 2002



*Entropia*, B/W-print, 31.5 x 34.6 in, series of 2, 2008



Lollipop, C-print, 70.9 x 86.6 in, 2009

*Ortung 2* (Installation view), Monitor, case, tiled room, video 720 x 576 px, Loop, 2009

Installation view, *One week forever*, Berlin, 2009



Ilja kloppenburg/Moritz Hirsch, *White Cube (To think outside the box, dt. Die Kurve kriegen)*, wood, lightprojection, 23 x 23 x 23 in, 2010



Ilja kloppenburg/Moritz Hirsch, *MiniMassive*  
wood, white paint, 32 neon tubes, round corners, 140 x 140 x 185 in, 2010

Come into the light! By entering this room you will find yourself in nonentity. Because of the round corners and the illuminated white painted walls you have the feeling to lose ground and to get lost in space.

Installation view, UdK Berlin, 2010

